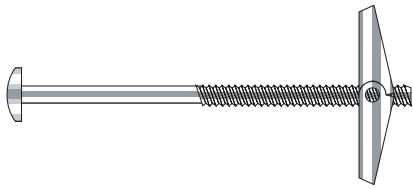
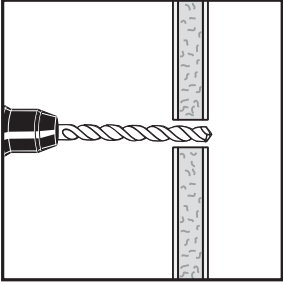


Mushroom Head

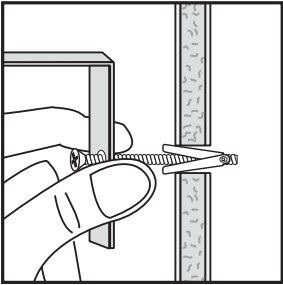


Backboard Installation

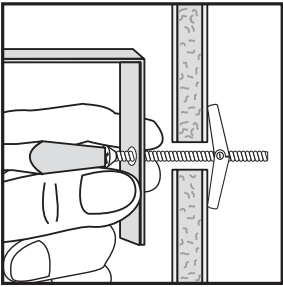
INSTALLATION PROCEDURES



Drill the required hole through the base material. The tolerances of the drill bit used should meet the requirements of ANSI Standard B212.15. In denser materials such as high strength concrete, drill the hole 1/16" larger.



Insert bolt through fixture to be fastened, thread on wings, then fold wings completely back and insert through hole until wings spring open.



Pull back on assembly to hold wings inside wall to prevent the wings from spinning while tightening bolt. Turn bolt with screwdriver until firmly tightened

PERFORMANCE DATA

The following load capacities are based on testing conducted according to ASTM Standard E 488.

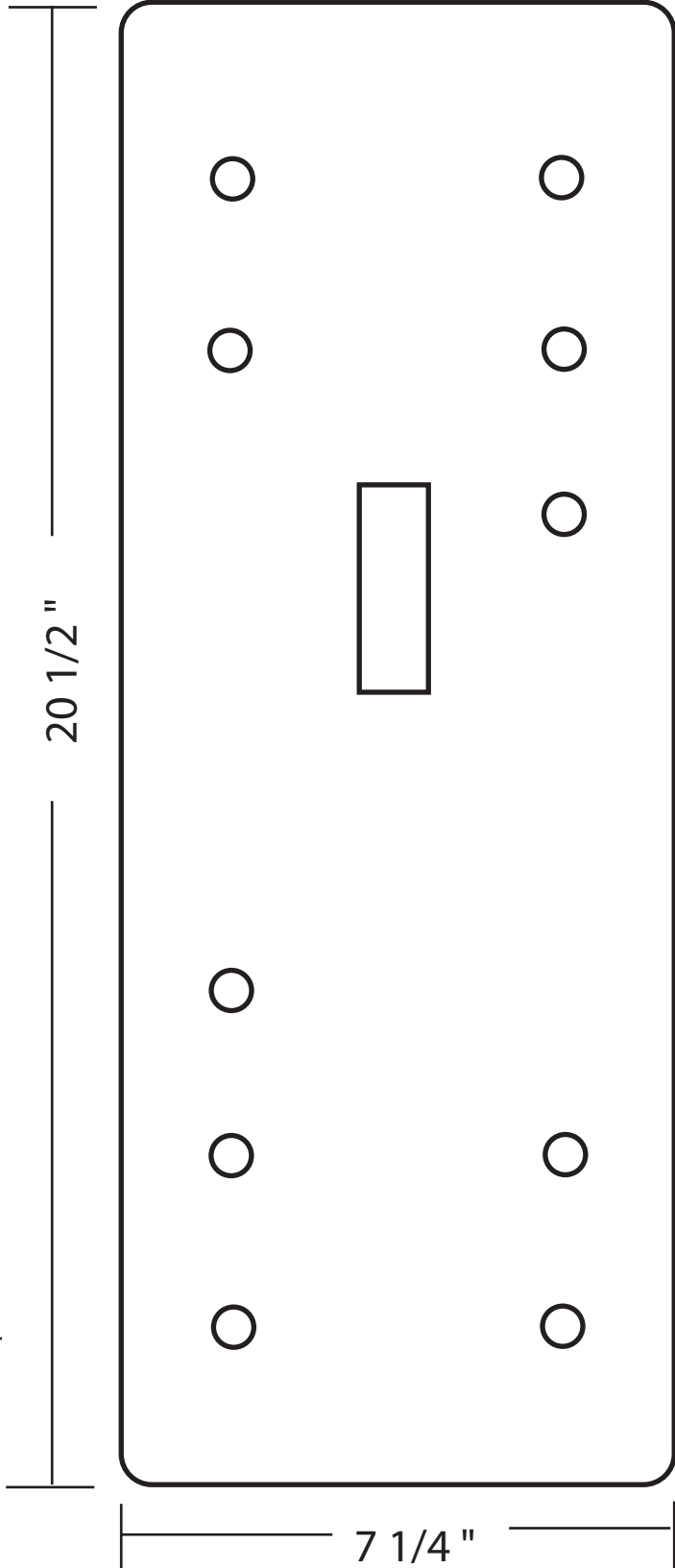
LOAD CAPACITIES IN GYPSUM WALLBOARD

ANCHOR SIZE (INCHES)	3/8" WALLBOARD		1/2" WALLBOARD		5/8" WALLBOARD		3/4" WALLBOARD	
	TENSION (LBS.)	SHEAR (LBS.)	TENSION (LBS.)	SHEAR (LBS.)	TENSION (LBS.)	SHEAR (LBS.)	TENSION (LBS.)	SHEAR (LBS.)
1/8"	150	180	200	205	250	265	290	310
3/16"	170	210	245	280	315	350	385	420
*1/4"	285	310	310	350	350	385	420	445
5/16"	320	360	330	420	365	450	425	510
3/8"	325	370	340	440	385	470	450	530
1/2"	340	410	435	470	520	560	555	600

* Also applies to 1/4" Tie-Wire Toggle.

NOTE: The values listed above are ultimate load capacities which should be reduced by a minimum safety factor of 4 or greater to determine the allowable working load. Since the consistency of gypsum wallboard varies greatly, these load capacities should be used as a guideline only. Job site tests should be conducted to determine the actual load capacities.

We use the 3/8" bolt for our installations in either the 3" or 4" length, depending on the thickness of the wall.



www.pubtel.net